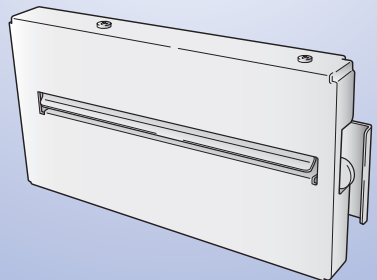




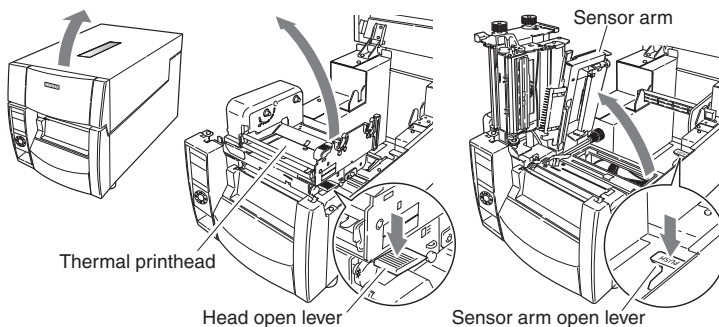
Installation Guide

7010 Auto Cutter



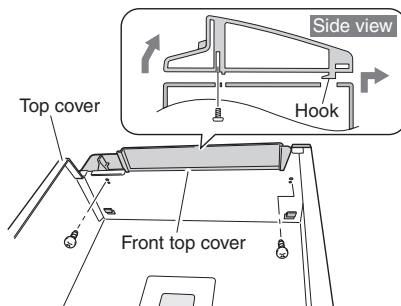
Installation Guide **CAUTION:** For use by service representatives!

- (1) Check to make sure that the printer's power switch is turned off then disconnect the power cord.
- (2) Open the top cover and lift the thermal printhead and sensor arm.



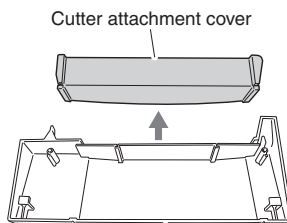
- (3) Remove the front top cover from the top cover. (2 screws)

Note There is a hook on the front top cover. Be careful not to bend the hook while removing the front top cover from the top cover.

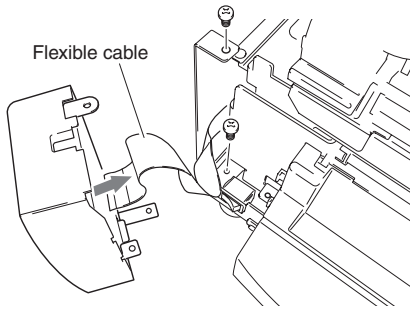


- (4) Remove the cutter attachment cover from the front top cover that you have removed.

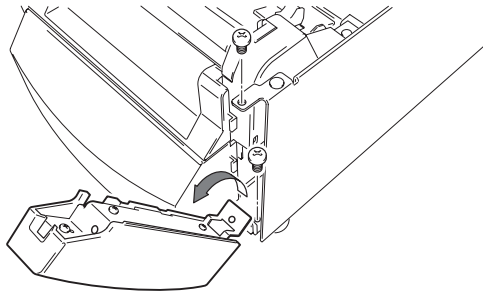
Note The cutter attachment cutter that you have removed is used to remove the auto-cutter unit, so store it carefully.



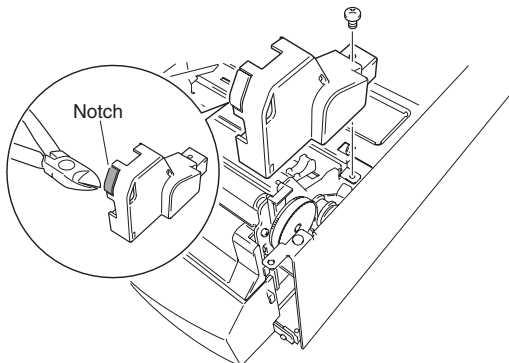
- (5) Remove the operation panel on the front of the printer. (2 screws)
When doing this, remove the flexible cable that is connected to the operation panel.



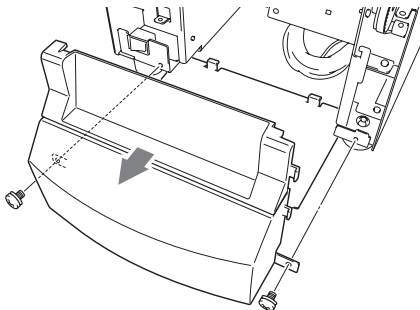
- (6) Remove the front right cover on the front of the printer. (2 screws)



- (7) Remove the pulley cover (black) that is on the right front part of the printer. (1 screw)
Using nippers, cut out the notch on the pulley cover that you have removed.

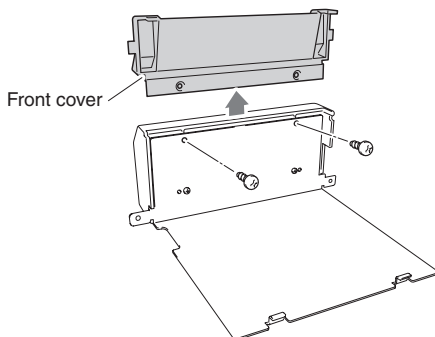


- (8) Remove the front center cover. (2 screws)



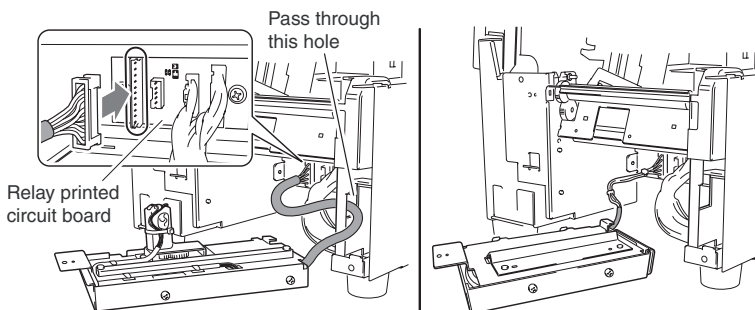
- (9) Remove the front cover from the front center cover that you have removed. (2 screws)

Note The front cover that you have removed is used when the auto-cutter unit has been removed, so store it carefully.



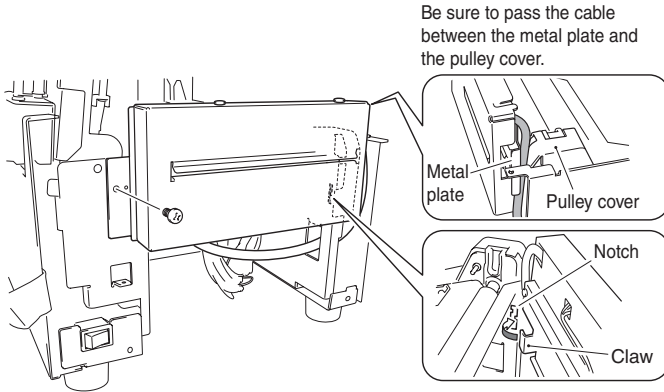
- (10) Attach the pulley cover (black) that you removed at step 7 in its original position.

- (11) Connect the connector of the auto-cutter unit to the relay printed circuit board as shown in the figure.



Note If you pass the connector through in the wrong insertion direction, it cannot be connected. Insert it after checking the direction of the connector (1 pin on the bottom).

- (12) Insert the claw on the right side of the auto-cutter unit into the notch on the printer, then fix it in place with the attached screw (1).



- (13) Attach the front center cover from step 9 in its original position. (2 screws)
- (14) Attach the front right cover removed at step 6 in its original position. (2 screws)
- (15) Attach the operation panel removed at step 5 in its original position. (3 screws)

Note

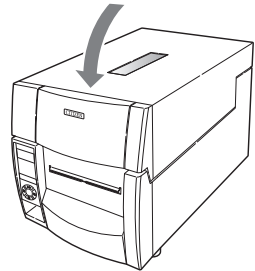
Be sure to connect the flexible cable that you disconnected as it was formerly connected. The blue side of the tip is upwards.

- (16) Attach the front top cover from step 4 in its original position. (2 screws)
- (17) Close the top cover.
- (18) Connect the power cord and turn on the power switch on the printer.

Note

Removing the auto-cutter unit

To remove the auto-cutter unit from the printer, follow the installation steps in reverse order. If the screws that fasten the auto-cutter unit are removed, the unit may fall from the printer, so hold the auto-cutter unit with your hand while loosening the fastening screws.



DASCOM REPRESENTATIVES

GERMANY

DASCOM Europe GmbH
Heuweg 3
D-89079 Ulm
Deutschland
Tel.: +49 (0) 731 2075 0
Fax: +49 (0) 731 2075 100
www.dascom.com

UNITED KINGDOM

DASCOM GB Ltd
ViewPoint, Basing View,
Basingstoke, Hampshire
RG21 4RG, England
Phone: +44 (0) 1256 481481
Fax: +44 (0) 1256 481400
www.dascom.com

RUSSIA and CIS

DASCOM Europe GmbH
Representation Moscow
Leninsky Prospekt 95a, Office 322
119313 Moscow, Russian Federation
Phone: +7 (495) 984 70 65
Fax: +7 (495) 984 56 42
www.dascom.com

SINGAPORE

DASCOM AP Pte Ltd
63 Hillview Avenue
#08-22, Lam Soon Industrial Building
Singapore 669569
Phone: +65 6760 8833
Fax: +65 6760 1066
www.dascom.com

FRANCE

DASCOM Europe GmbH
117 Avenue Victor Hugo
92100 Boulogne-Billancourt
France
Phone: +33 (1)73 02 51 98
www.dascom.com

CEE

DASCOM Europe GmbH
Europaring F15 301
2345 Brunn a. G.
Austria
Phone: +43 (1) 236 01 70 10
www.dascom.com

AMERICAS

DASCOM Americas Corporation
421 W. Main Street
Waynesboro, VA 22980
USA
Phone: +1 (877) 434 13 77
www.dascom.com